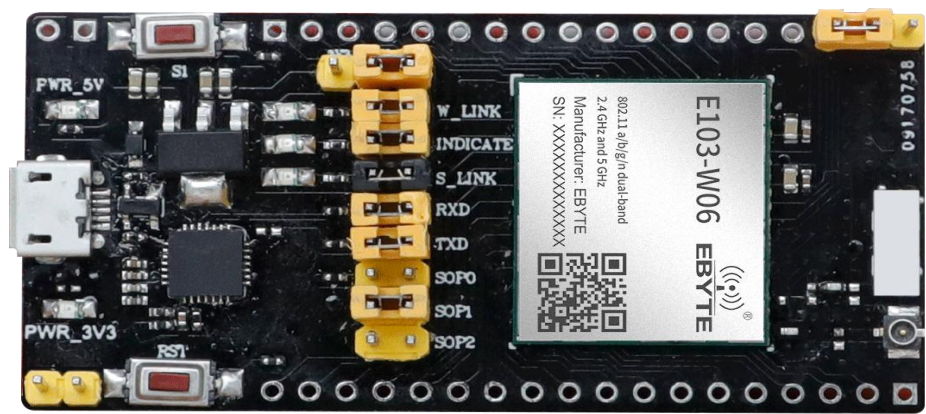




E103-W06-TB User Manual V1.1

1. Introduction

1.1 Features

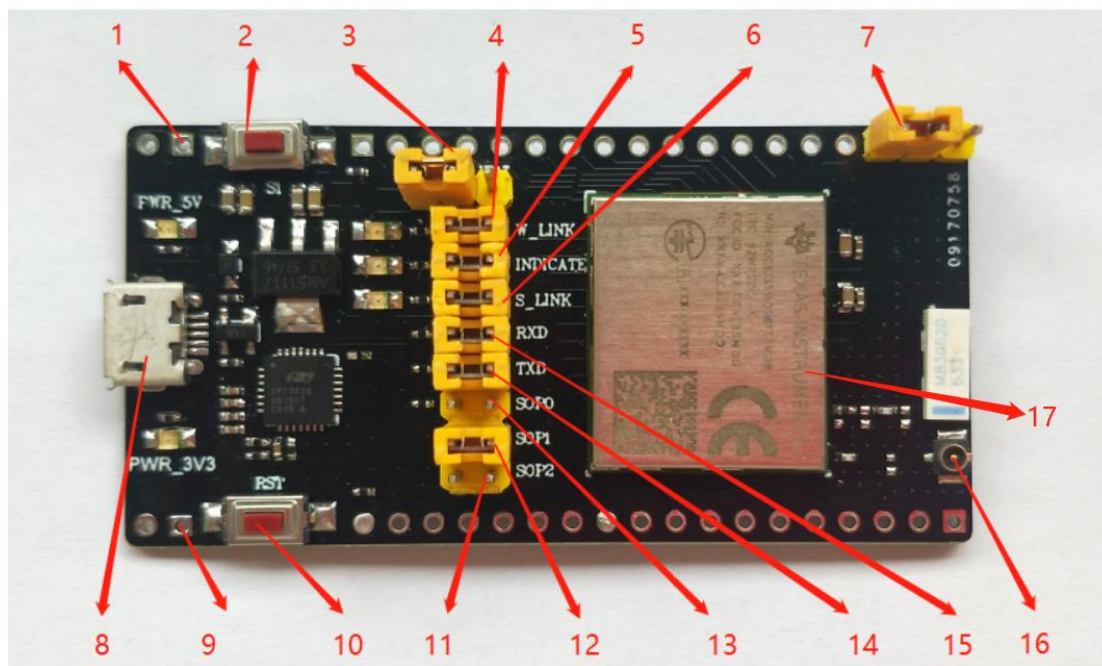


The E103-W06-TB test board uses a USB interface, which can be used to quickly test the features and functions of the E103-W06 module.

1.3 Electric Parameter

Num	Parameter Name	Parameter Value	Remark
1	Support module	E103-W06	WiFi Serial Module
2	Module size	62 * 31 mm	With USB Interface
3	Production Process	Lead-free process, machine paste	Ensure batch consistency and reliability
4	Power supply interface	USB	-
5	Communication Interface	TTL	-
6	Operating temperature	-40 ~ +85°C	Industrial grade
7	Working humidity	10% ~ 90%	Relative humidity, non-condensing
8	Storage temperature	-40 ~ +125°C	Industrial grade

2.1 Pin Definition



Pin NO.	Name	Pin direction	Application
1	+5V	-	+5V external power supply (not powered by USB)
2	S1	-	NC
3	3.3V	-	For module power supply selection, connect the power supply jumper cap to the left end (ie 3.3V shorted to 3V3) through the power chip; connect the jumper cap for direct battery power supply to the right end (ie 3.3V shorted to VBAT)
4	W_LINK	TX	WiFi connection indication, connection: output high, LED off. Disconnected: the output is low and the LED is on.
5	INDICATE	TX	Module abnormal connection indication, abnormal: output is high, LED is off. Normal: The output is low and the LED is on.
6	S_LINK	TX	Socket connection indication, connection: output high, LED off. Disconnected: the output is low and the LED is on.
7	VBAT_RESET	-	Reset enable, connect the jumper cap: reset is pulled up to 3.3V through a 100K resistor.
8	USB Interface	-	Serial input, output and power supply

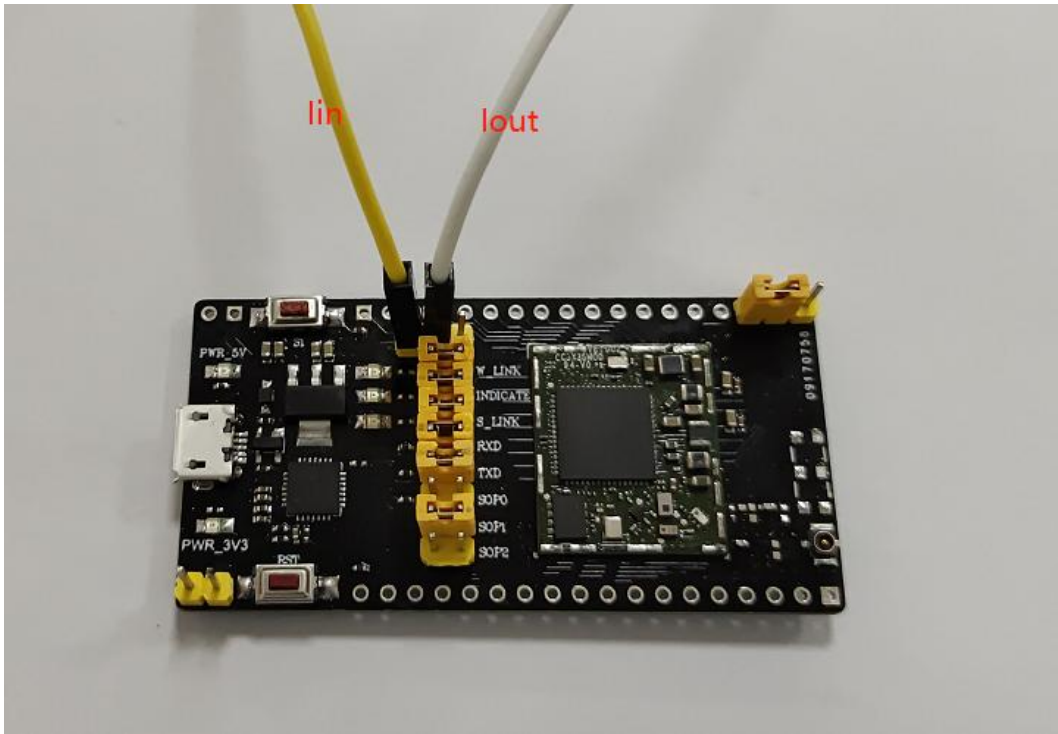
Page 1 of 5

The copyright and the final interpretation right of the product belong to Chengdu Ebyte Electronic Technology Co., Ltd.

9	VBAT	-	Battery-powered input port, power supply 2.3V~3.6V
10	RST	RX	Module reset button
11	SOP2	RX	Program loading mode selection
12	SOP1	RX	Program loading mode selection
13	SOP0	RX	Program loading mode selection
14	TX	TX	Module TX transmission
15	RX	RX	Module RX receiving
16	IPX	RX/TX	External radio frequency interface (external antenna requires jumper resistance)
17	E103-W06	-	E103-W06 module

Note: Please refer to the user manual of E103-W06 for specific function instructions.

2.2 Function Test



Function	Description
Test receiving and transmitting current	Connect the ammeter to pin 3, as shown in Figure 3, the current test interface diagram, the current enters from Iin and exits from Iout. xian If you want to test the sleep current, connect the meter and send the command:

Choose us because of professional Wireless application experts such as wireless transparent transmission, WiFi, Bluetooth, Zigbee, PKE, WIFI serial server, etc.

	AT+SLEEPIN
Data transmission test	Basic data transmission refer to Chapter 7 Section 1 of E103-W06_datasheet_EN Network communication refer to E103-W06_datasheet_CN Section 7 Section 2
Module parameter modification	Need to modify the module parameters, please refer to the seventh section of E103-W06_datasheet_CN

2.3 CCH9102D Driver Installation

If it is the first time to use the CH9102D interface conversion module, the PC will prompt to install the new device driver, which can be searched and downloaded online, or the driver wizard can download the driver.

3. Customized cooperation

★If company customers need product customization, please contact our company.

★Ebyte has reached in-depth cooperation with many well-known companies.



4. About us



Technical support: support@cdebyte.com

Documents and RF Setting download link: <https://www.cdebyte.com>

Thank you for using Ebyte products! Please contact us with any questions or suggestions:
info@cdebyte.com

Official hotline: 028-61399028

Web: <https://www.cdebyte.com>

Address: B5 Mould Park, 199# Xiqu Ave, High-tech District, Sichuan, China



Chengdu Ebyte Electronic Technology Co., Ltd.

Choose us because of professional Wireless application experts such as wireless transparent transmission, WiFi, Bluetooth, Zigbee, PKE, WIFI serial server, etc.