



E43-900TB-01

E43-900T13S3 Test Board



Contents

Disclaimer	2
1. Product Introduction	3
2. Quick Start	4
2.1. Test Preparation	4
2.2. Communication in Mode 0	5
2.3. Other Mode	6
Revision History	7
About us	7

Disclaimer

The information in this document, including the URL address for reference, is subject to change without notice. Documents are provided "as is" without any warranty, including any warranty of merchantability, fitness for a particular purpose or non-infringement, and any warranty referred elsewhere of any proposal, specification or sample. This document does not bear any responsibility, including the responsibility for any patent infringement caused by the use of the information in this document. This document does not grant any license for the use of intellectual property by estoppel or otherwise, whether express or implied.

The data in this paper are all from Ebyte laboratory, and the actual results may be slightly different.

It is hereby declared that all trade names, trademarks and registered trademarks mentioned here are the property of their respective owners.

The final interpretation right belongs to Chengdu Ebyte Electronic Technology Co., Ltd.

Notice:

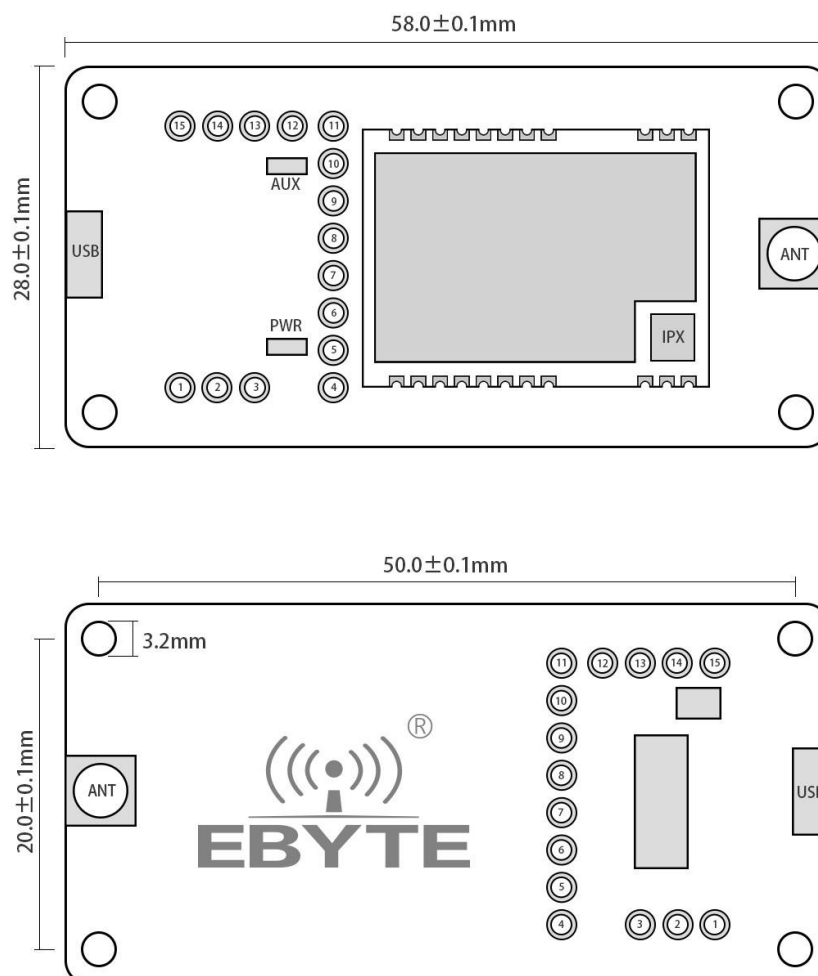
The contents of this manual may be changed due to product version upgrade or other reasons. Ebyte Electronic Technology Co., Ltd. reserves the right to modify the contents of this manual without any notice or prompt. This manual is only used as a guide. Chengdu Ebyte Electronic Technology Co., Ltd. will try its best to provide accurate information in this manual. However, Chengdu Ebyte Electronic Technology Co., Ltd. does not guarantee that the contents of this manual are completely correct, and all statements, information and suggestions in this manual do not constitute any express or implied warranty.



1. Product Introduction

E43-900TB-01 is a set of test kits formed by serial SMD serial port module combined with USB to TTL serial port for customer's testing and development, which greatly reduces the difficulty of testing and development. About more details, please refer to the manual of module [E43-900T13S3](#).

1.1. Size and Pin Definition



Pin	Value	Function
1	5V	Jumper short connected with VCC, for power input
2	VCC	Power input
3	3.3V	Jumper short connected with VCC, for power input
4	GND	Ground
5	VCC	Power input
6	NC1	/
7	NC2	/
8	NC3	/
9	RXD	RXD, to connect TXD of module for test
10	TXD	TXD, to connect RXD of module for test
11	AUX	Check more from manual of E22 module
12	M1	Pin M1 for mode selection, suspending means“1”, when short connected with GND, it is“0”
13	GND	Ground, often work with M1
14	M0	Pin M0 for mode selection, suspending means“1”, when short connected with GND, it is“0”
15	GND	Ground, often work with M0

2. Quick Start

2.1. Test Preparation

2.1.1. Install driver

Download driver program [CH341SER.EXE](#) from Ebyte website, double click to install. The driver program supports 32/64 bit Windows 10/8.1/8/7/VISTA/XP, SERVER2016/2012/2008/2003, 2000/ME/98, with software digital signature authentication, good for USB to 3-wire and 9-wire serial port connection.

2.1.2. Connect to hardware

Prepare power adaptor、Micro USB cable、antenna、power supply, connect them to test board E43-900TB-01, open corresponding serial port.

2.2. Communication in Mode 0



As shown above, connect to jumpers (5V power supply, mode 0), both E43-900TB-01 are configured this way, open serial port, for data TX and RX, and AUX indicator is blinking.



2.3. Other Mode



As shown above, connect to jumpers (5V power supply, mode 1) , see function details from E32 UART module manual.



As shown above, connect to jumpers (5V power supply, mode 2) , see function details from E32 UART module manual.



As shown above, connect to jumpers (5V power supply, mode 3) , see function details from E32 UART module manual.

Revision History

Version	Date	Description	Issued By
1.0	2021-3-1	Initial version	Linson

About us

Hotline: 4000-330-990

Tel: 028-61399028

Support: support@cdebyte.com

Website: <https://www.cdebyte.com>

Address: Building B5, No. 199, West District Avenue, High-tech West District, Chengdu City, Sichuan Province

