



成都亿佰特电子科技有限公司
Chengdu Ebyte Electronic Technology Co.,Ltd.

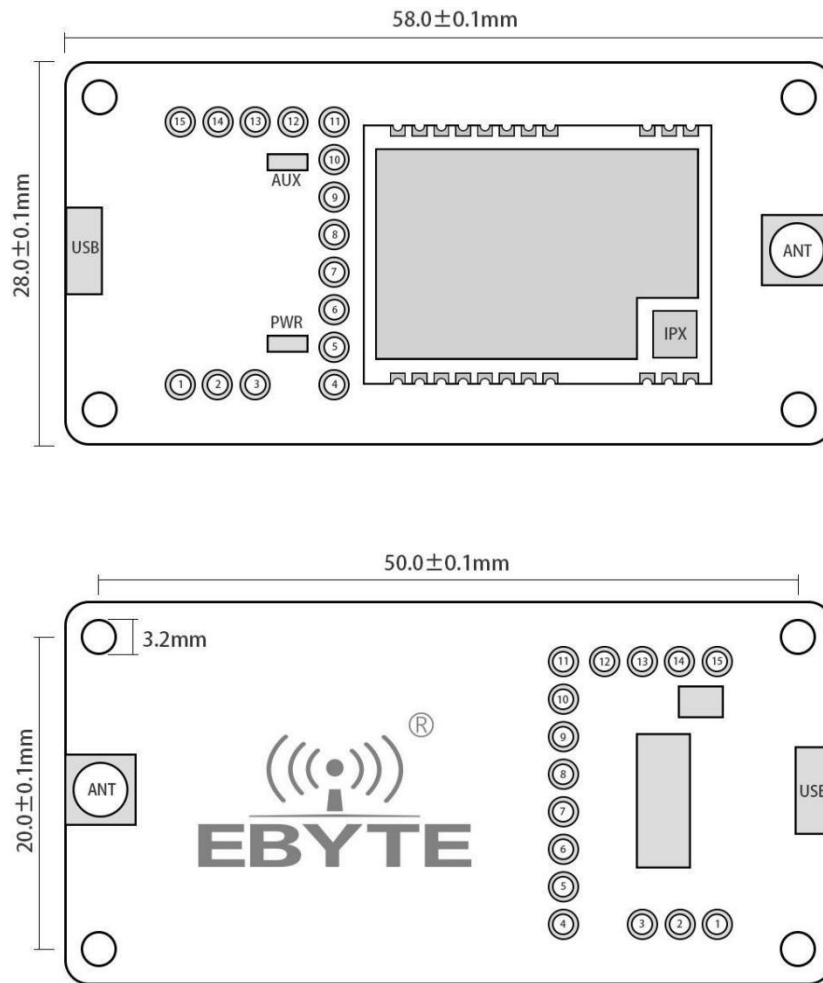
E31-433TBH-01 Datasheet
v1.0



1. Product Introduction

E31-433TBH-01 is a test kit formed by the SMD serial port module and USB to TTL serial port backplane. It is for customer's testing and development, which greatly reduces the difficulty of testing and development.

This manual describes how to use the test kit. For more details, please refer to the user manual of [E31-433T30S](#).



Pin No.	Definition	Function
1	5V	5V for the board, jumper short connected with VCC for power input
2	VCC	Power input for module
3	3.3V	3.3V for the board, jumper short connected with VCC for power input
4	GND	Board Groud
5	VCC	Power input for module
6	NC1	No need to care
7	NC2	No need to care
8	NC3	No need to care
9	RXD	Board RXD, connecting module TXD for test
10	TXD	Board TXD, connecting module RXD for test
11	AUX	Module AUX, pls refer to the module's user manual for specific funtions.
12	M1	Pin M1, for module's mode selection, suspending means "1", when jumper is short connected with GND, it is "0"
13	GND	Board Groud, often work with M1

14	M0	Pin M0, for module's mode selection, suspending means "1", when jumper is short connected with GND, it is "0"
15	GND	Board Groud, often work with M0

2.1. Test preparation

2.1.1. Driver installation

Please download the driver program CH341SER.EXE from Ebyte official store, and double click to install it. The driver program supports 32/64bit Windows 10/8.1/8/7/VISTA/XP, SERVER2016/2012/2008/2003, 2000/ME/98, certified by Microsoft Digital Signature, and supports USB to 3-wire and 9-wire, etc.

2.1.2. Hardware connection

Please prepare Micro USB cable, antenna and connect them to E31-433TB-01 rightly. Open corresponding serial port.

2.2. Mode 0: for Communication



As shown in the figure, plug in the jumper cap (select 5V power supply, mode 0), both E31-433TBH-01 are configured in the same way, open the corresponding serial port, you can send and receive data, and you can observe the flashing of the AUX light on the board.





As shown in the figure, insert the jumper cap (select 5V power supply, mode 1).
For specific functions, please refer to the user manual of E31-433T17S3.



As shown in the figure, insert the jumper cap (select 5V power supply, mode 2).
For specific functions, please refer to the user manual of E31-433T17S3.



As shown in the figure, insert the jumper cap (select 5V power supply, mode 3).
For specific functions, please refer to the user manual of E31-433T17S3.

About us

Hotline: 4000-330-990

Tel: 028-61399028

Support: support@cdebyte.com

Website: <https://www.cdebyte.com>

Address: Building B5, No. 199, West District Avenue, High-tech West District,
Chengdu City, Sichuan Province



Chengdu Ebyte Electronic Technology Co.,Ltd.