



E104-BT12USP-TB



Contents

Disclaimer.....	3
1 Introduction.....	4
1.1 Features.....	4
1.2 Electrical parameters.....	5
2 Function brief.....	5
2.1 Pin definition.....	6
2.2 Function test.....	6
2.3 CH340 driver installation	5
3 Customized cooperation.....	7
4 About us.....	7

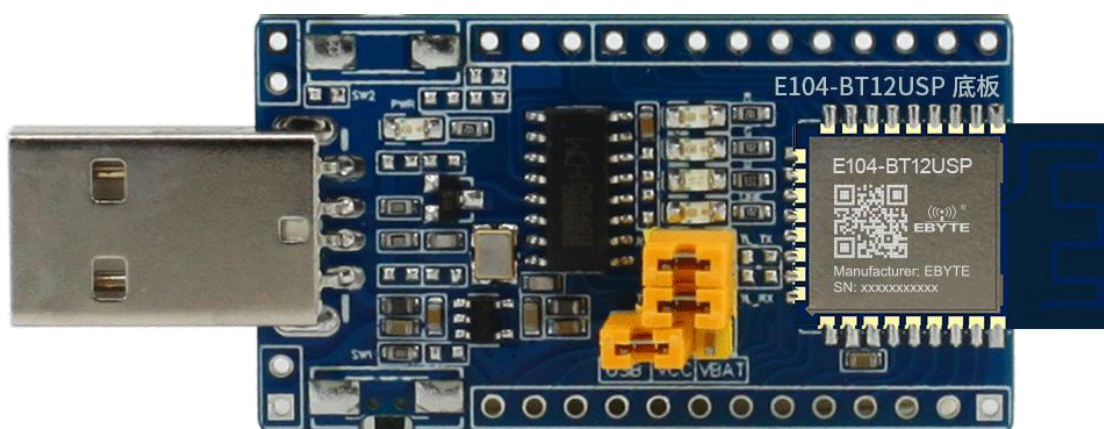
Disclaimer

EBYTE reserves all rights to this document and the information contained herein. Products, names, logos and designs described herein may in whole or in part be subject to intellectual property rights. Reproduction, use, modification or disclosure to third parties of this document or any part thereof without the express permission of EBYTE is strictly prohibited.

The information contained herein is provided “as is” and EBYTE assumes no liability for the use of the information. No warranty, either express or implied, is given, including but not limited, with respect to the accuracy, correctness, reliability and fitness for a particular purpose of the information. This document may be revised by EBYTE at any time. For most recent documents, visit www.ebyte.com.

1. Introduction

1.1 Features



The E104-BT12USP-TB test board uses a USB interface, which can be used to quickly test the Bluetooth-related features and functions of the E104-BT12NSP

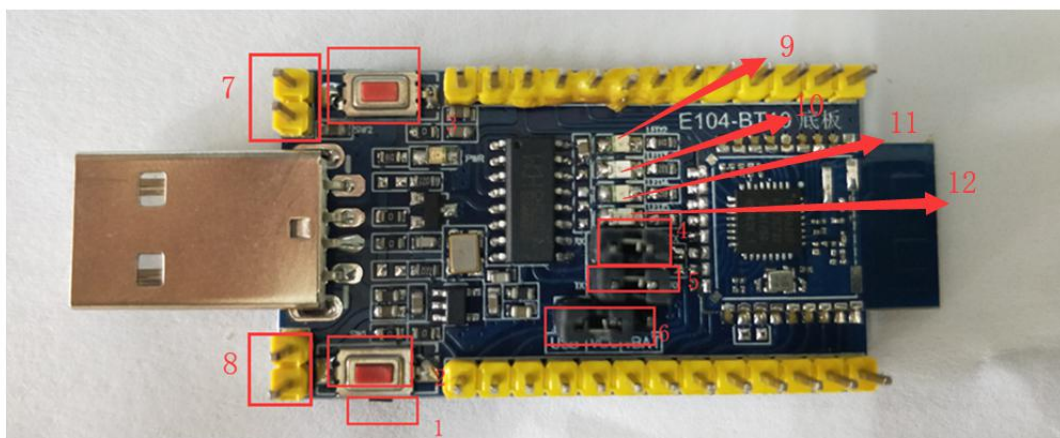
1.2 Electrical parameters

No.	parameter name	Parameter value	Annotation
1	Support module	E104-BT12USP	Mesh Networking module
2	Module size	46.5 * 26 mm	With USB connector
3	Production Process	Lead-free process, machine-mounted	Wireless products must be machine-mounted to ensure batch consistency and reliability
4	Power supply interface	USB	-
5	Communication Interface	TTL	-
6	Operating temperature	-40 ~ +85℃	Industrial grade
7	Working humidity	10% ~ 90%	Relative humidity, non-condensing
8	Storage temperature	-40 ~ +125℃	Industrial grade

2. Function brief

2.1 Pin definition

Pin usage



Pin No.	Pin name	Pin direction	Pin usage
1	RST	Input	Module reset button
2	SW1	Input	retain
3	SW2	Input	retain
4	TX	output	Serial output pin
5	RX	Input	Serial input pin
6	VCC	-	The jumper cap selects whether it is USB powered or battery powered
7	BAT	-	Battery power supply pin
8	+5V	-	External power supply pin (not powered by USB)
9	LED_R (PD2)	output	Pwm output
10	LED_G (PC1)	output	Pwm output
11	LED_B(PB5)	output	Pwm output
12	LED_B(PB4)	output	Network indicator

2.2 Function test

Refer to E104-BT12 tool usage tutorial

2.3 CH340 driver installation

If it is the first time to use the CH340 interface conversion module, the PC will prompt to install the new device driver, which can be searched and downloaded online, or the driver wizard can download the driver

3. Customized cooperation

★If customers need product customization, please contact us.

★Ebyte has reached in-depth cooperation with many well-known companies.



4. About us



EBYTE is a company specializing in providing wireless data transmission solutions and products

- ◆Independently research and develop hundreds of models of products and software;
- ◆Wireless transparent transmission, WiFi, Bluetooth, Zigbee, PKE, digital radio and many other series of wireless products;
- ◆With nearly a hundred employees, tens of thousands of customers, and cumulative sales of millions of products;
- ◆Business covers more than 30 countries and regions around the world;
- ◆Passed the ISO 9001 quality management system and ISO 14001 environmental system certification;
- ◆It has a number of patents and software copyrights, and has passed international FCC/CE/ROHS and other authoritative certifications.

【Phone】 028-61399028

【Tax】 028-64146160

【Website】 www.ebyte.com

【Technology Support】 support@cdebyte.com

【Address】 B5 Mould Park, 199# Xiqu Ave, High-tech District, Sichuan, China